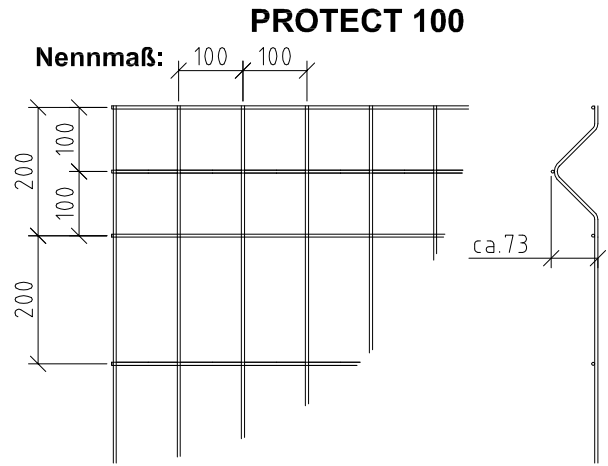
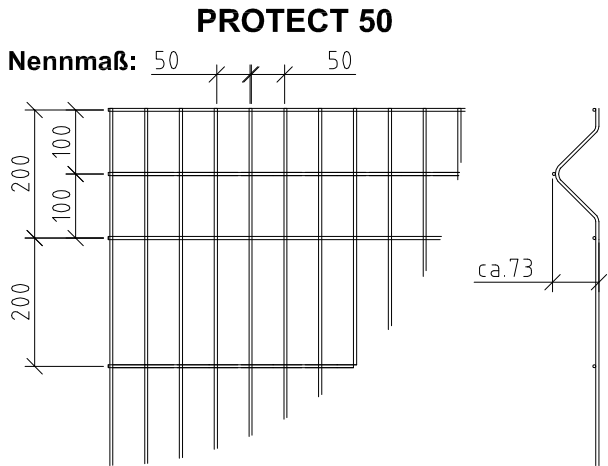


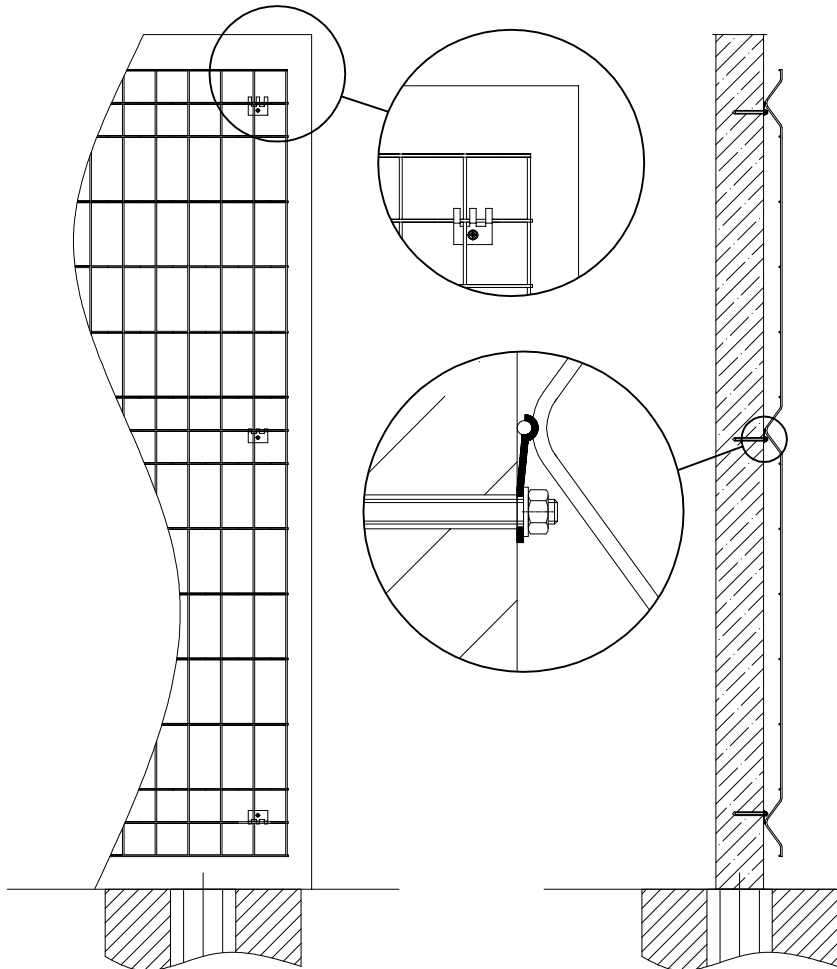


## Mattendetails - PROTECT 50 & 100



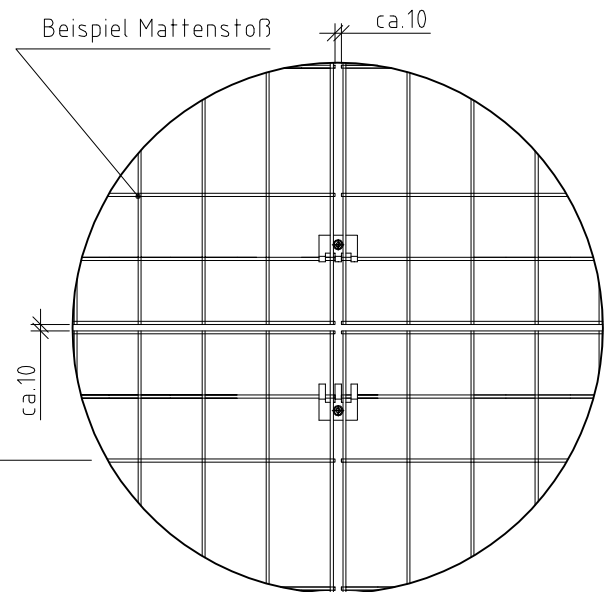
## Befestigungsdetails - PROTECT 50 & 100

### Variante 1

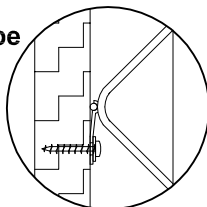


### Befestigungsvarianten

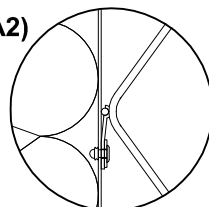
Variante	Unterkonstruktion
Var. 1	Beton, Mauerwerk usw.
Var. 2	Holzuntergrund
Var. 3	Bleche & Lochbleche



### Variante 2 Holzschraube



### Variante 3 Blindniet ø5 (AL/A2)



Stand: 22.09.08 (ID05)

Werkstoff = S235  
technische Änderungen bleiben uns vorbehalten